

TABLE OF CONTENTS

FEATURES	4
TECHNOLOGY STACK	4
GALLERY	4
WAIT, WHERE IS THE DOCUMENTATION?	9
TAGSPROJECTINI-CONFIGURATORCONFIGURATORCONFIGURATION	10



[Source](#) [Issues](#) [Download](#) [Donation](#)

INI CONFIGURATOR

Author(s): Louis Ouellet

INI Configurator is a lightweight and user-friendly GUI application designed for configuring `.ini` files. The application allows users to seamlessly edit and manage configuration settings with a collapsible section-based interface, ensuring clarity and simplicity even with complex configuration files. The source code may be used to build similar applications for other configuration files.

FEATURES

- **Dynamic Configuration Editor:** Load, edit, and save my.ini configurations directly through the GUI.
- **Collapsible Sections:** Each configuration category is organized into collapsible sections for better organization and ease of navigation.
- **Customizable Fields:** Supports text inputs, dropdown selections, and folder path selection with default values.

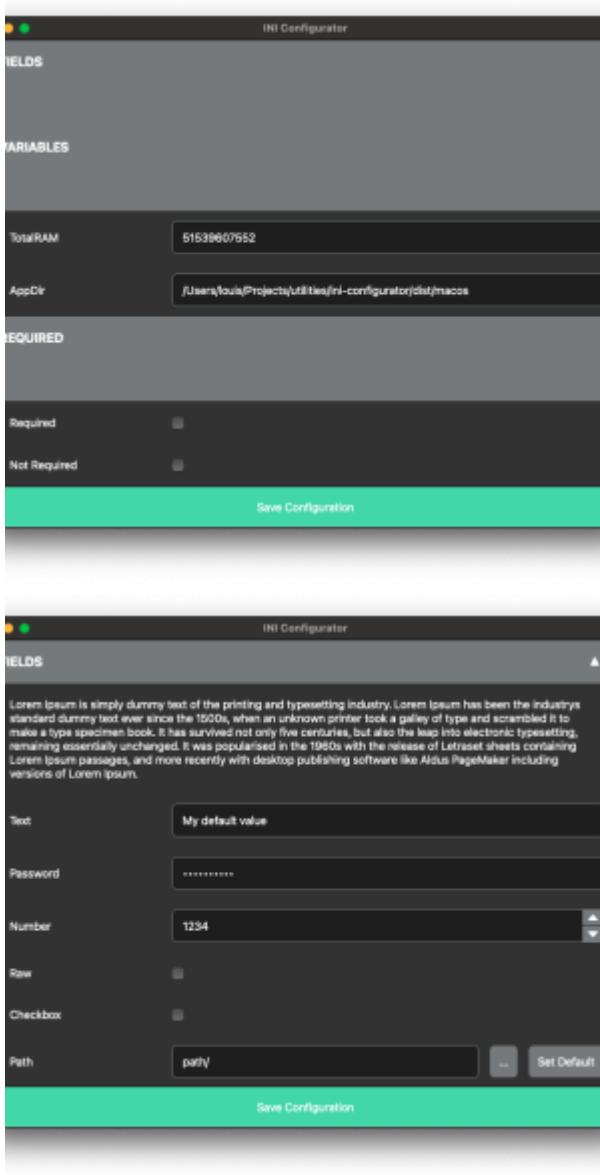
TECHNOLOGY STACK

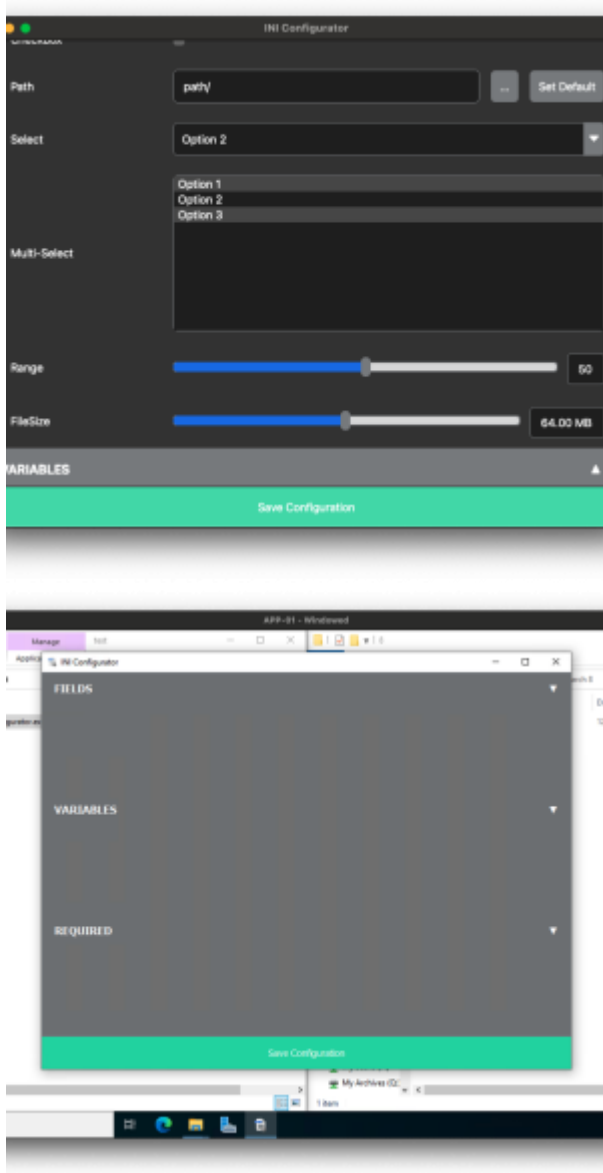
- **Python:** A simple yet powerful programming language used to build the core application logic.
- **PyQt5:** A modern GUI framework used for creating a visually appealing and responsive user interface.

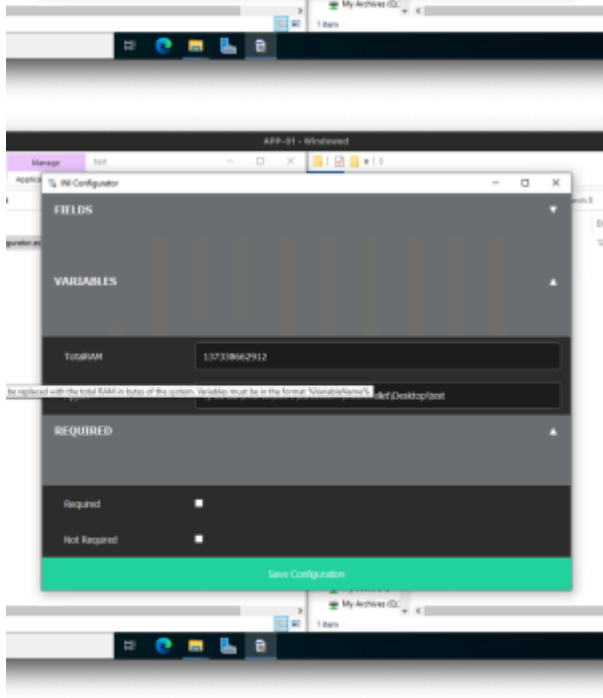
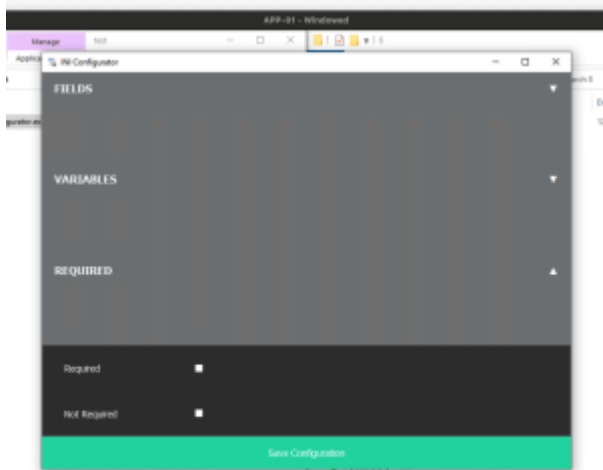
[Upload](#)

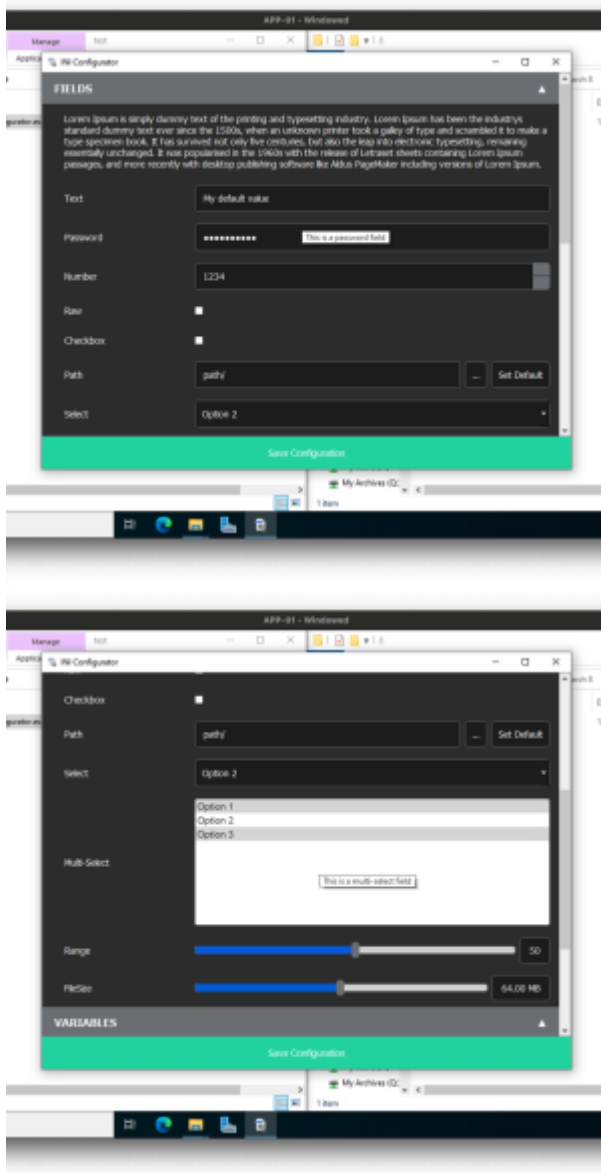
GALLERY











WAIT, WHERE IS THE DOCUMENTATION?

Review the [Documentation](#)

TAGSPROJECTINI- CONFIGURATORCONFIGURATORCONFIGURATION

- [Twitter](#)
- [Facebook](#)
- [LinkedIn](#)
- [Reddit](#)
- [Telegram](#)
- [Email](#)

From:
<https://laswitchtech.com/> - **LaswitchTech**

Permanent link:
<https://laswitchtech.com/en/projects/ini-configurator/index>

Last update: **2024/12/05 15:05**

